

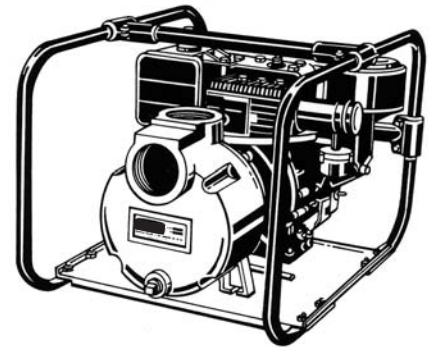
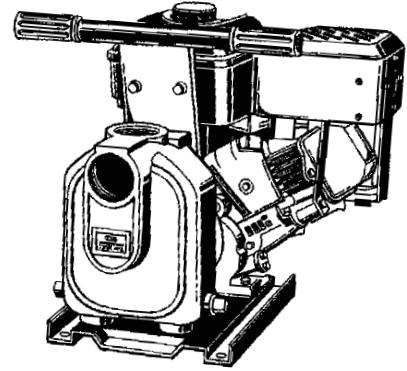
SERIES PG

General Purpose Pumps
With Honda Engines



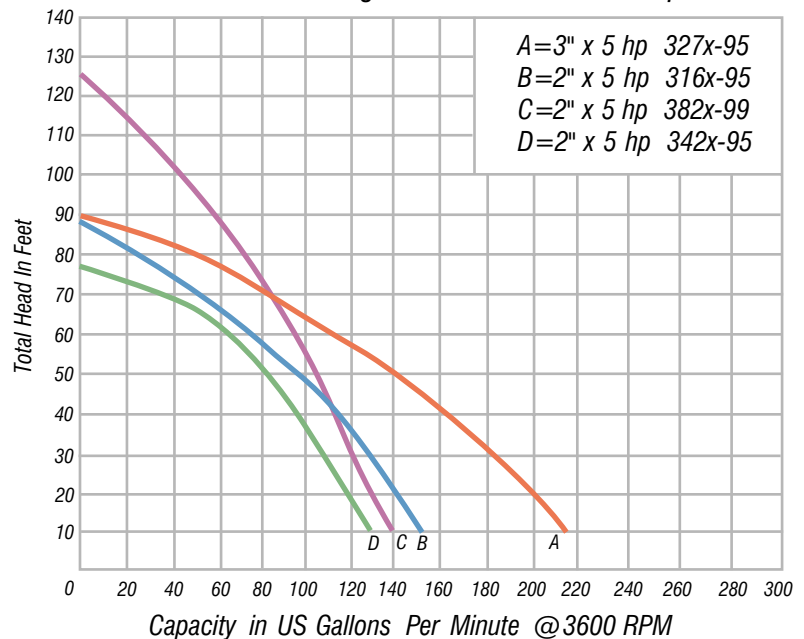
Product Features

- Honda overhead cam engines.
- Cast iron or polypropylene construction.
- Solids handling.
- Self-priming to 20 ft.
- Silicon carbide shaft seals.
- 75 psi maximum working pressure.
- Temperature ratings up to 180 deg. F
- 217 usgpm maximum flow.
- 125 ft. maximum discharge head.
- Semi-open, non-clog impellers.
- Wheel kits available on some models.
- 2" or 3" FNPT ports.

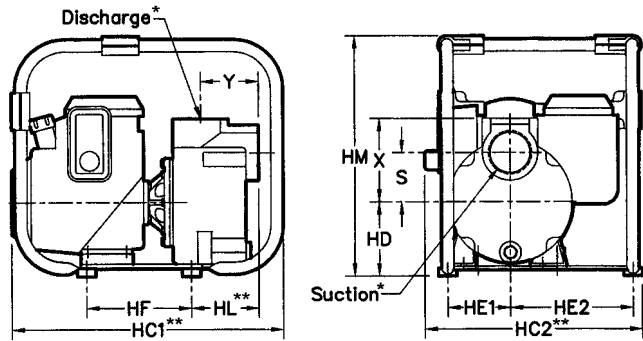


MEGGA general purpose pumps feature Honda GC overhead cam engines that offer high quality and value. The various models are designed to cover a wide array of applications including industrial, agricultura, commercial and municipal. The cast iron models feature dual volute designs that reduce radial loads and either heavy duty roll frame or T-handle base. Thermoplastic units have a built in handle. Each unit includes two NPT pipe nipples. Select the pump that meets your application and enjoy the performance and reliability of a **MEGGA** pump. Pumps are designed for use with non-flammable fluids compatible with component materials.

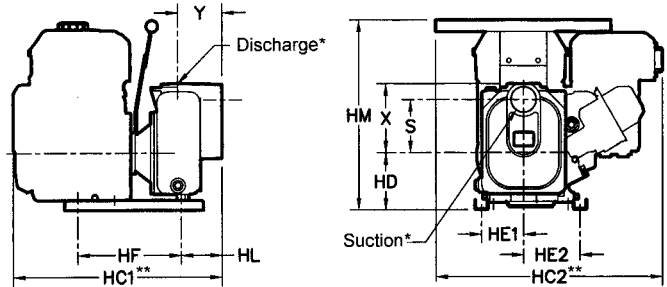
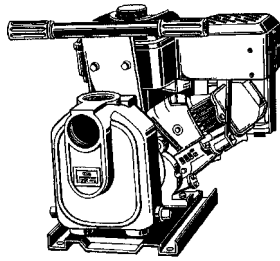
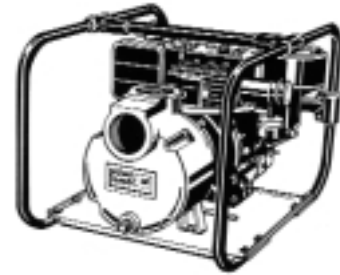
Performance of Engine Driven Honda Pumps



General Purpose Pumps with Honda Engines



Model 3168-95 & 327A-95



Model 3424-95 & 382A-99

Pump Dimensional Data

Model No.	SUC*	DIS*	HC1**	HC2**	HD	HE1	HE2	HF	HL**	HM**	S	X	Y	Driver
3424-95	2"	2"	18.4	15.6	4.8	3.6	4.8	8.8	3.4	16.1	4.5	5.8	3.7	5 hp Honda GC135
3425-95	2"	2"	18.4	15.6	4.8	3.6	4.8	8.8	3.4	16.1	4.5	5.8	3.7	5 hp Honda GC135
382A-99	2"	2"	18.7	15.6	4.1	2.6	3.7	3.1	9.5	12.7	1.0	5.7	2.8	5 hp Honda GC160
382B-99	2"	2"	18.7	15.6	4.1	2.6	3.7	3.1	9.5	12.7	1.0	5.7	2.8	5 hp Honda GC160
3168-95	2"	2"	19.0	17.1	4.9	4.5	9.4	8.5	4.5	15.8	2.1	4.7	3.1	5 hp Honda GC135
327A-95	3"	3"	22.0	17.6	6.0	5.0	9.9	8.5	5.4	19.4	4.0	6.7	4.6	5 hp Honda GC160
327B-95	3"	3"	22.0	17.6	6.0	5.0	9.9	8.5	5.4	19.4	4.0	6.7	4.6	5 hp Honda GC160

(*) Standard NPT (female) pipe thread.

(**) This dimension may vary due to engine manufacturer's specifications.

NOTE: Dimensions have a tolerance of $\pm 1/8"$.

Pump Performance & Specification Data

Model No.	Type	Driver	Pump Construction	Seals	Check Valve	Roll Frame	Max. Solid Dia.	Liquid Temp.	Run Time	Tank Size	Ship Wt.
3424-95	2" Dewatering	5 hp Honda GC160	Cast Iron	Viton®	No	No	3/8"	200° F	60 min.	1.8 Qt.	65 lbs.
3425-95	2" Dewatering	5 hp Honda GC160	Cast Iron	Buna-N/Sil Carb	No	No	3/8"	160° F	60 min.	1.8 Qt.	65 lbs.
382A-99	2" Dewatering	5 hp Honda GC160	Polypropylene	Buna-N	Yes	No	7/16"	130° F	60 min.	1.8 Qt.	45 lbs.
382B-99	2" Dewatering	5 hp Honda GC160	Polypropylene	EPDM	Yes	No	7/16"	130° F	60 min.	1.8 Qt.	45 lbs.
3168-95	2" Solids Handling	5 hp Honda GC160	Cast Iron	Buna/Sil Carb	Yes	Yes	3/8"	160° F	60 min.	1.8 Qt.	80 lbs.
327A-95	3" Solids Handling	5 hp Honda GC160	Cast Iron	Viton®	No	Yes	3/4"	200° F	60 min.	1.8 Qt.	109 lbs.
327B-95	3" Solids Handling	5 hp Honda GC160	Cast Iron	Buna/Sil Carb	No	Yes	3/4"	160° F	60 min.	1.8 Qt.	109 lbs.

Standard Features

- Honda Overhead Cam Engine
- Cast Iron or Polypropylene Construction
- Solids Handling Capability
- Self-priming to 20 ft.
- Buna-N/Silicon Carbide or Viton® Mechanical Seals
- Maximum Working Pressure 75 PSI
- Maximum Temperature
 - Buna-N/Silicon Carbide 160° F
 - EPDM 180° F
 - Viton® 200° F
- Semi-open, Clog Resistant Impeller
- Wheel Kits Available for Units with Roll Frame; Order Model A734-90
- 2" or 3" NPT Ports